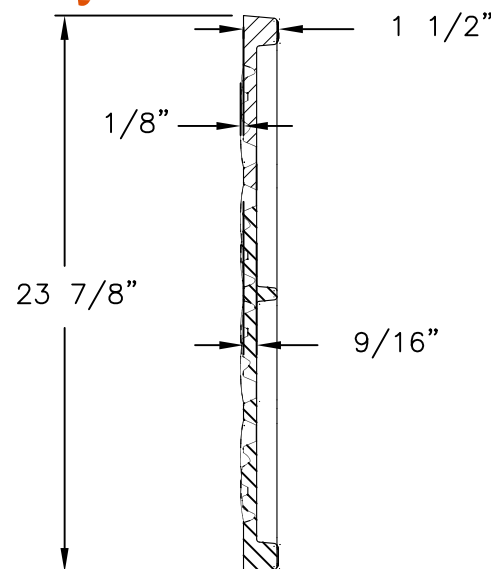
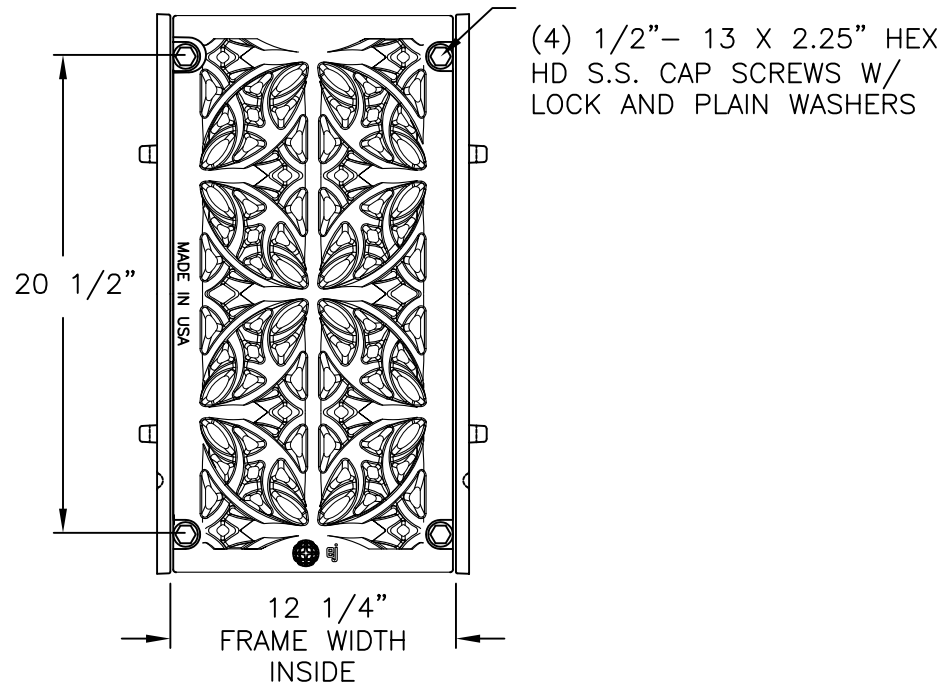
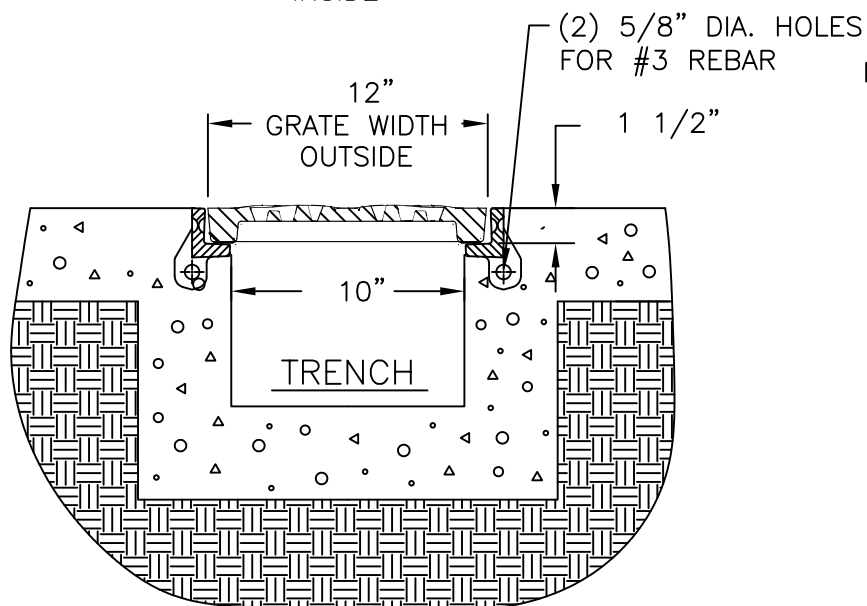


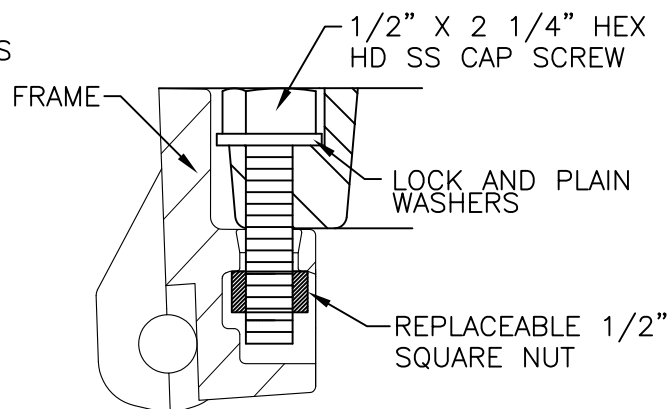
# 6873M 6950Z1 GARLAND Assembly



GRATE SECTION



TYP SECTION



BOLT DETAIL

## Product Number

00687301

## Design Features

### -Materials

Trench Grate

Gray Iron (CL35B)

Trench Rail

Gray Iron (CL35B)

### -Design Load

Medium Duty

### -Open Area

26 SQ. IN.

### -Coating

Undipped

-√ Designates Machined Surface

## Certification

- ASTM A48

-

-

-Country of Origin: USA

## Major Components

00687333

00695013

## Drawing Revision

08/10/2006 Designer: DEW

07/12/2013 Revised By: DJH

## Disclaimer

Weights (lbs./kg) dimensions (inches/mm) and drawings provided for your guidance. We reserve the right to modify specifications without prior notice.

CONFIDENTIAL: This drawing is the property of EJ GROUP, Inc., and embodies confidential information, registered marks, patents, trade secret information, and/or know how that is the property of EJ GROUP, Inc. Copyright © 2012 EJ GROUP, Inc. All rights reserved.

## Contact

800 626 4653  
ejco.com

CAUTION: CHECK TRENCH RAIL AND GRATE BEFORE FINALIZING INSTALLATION. BE CAUTIOUS IN LINING UP ADJACENT ASSEMBLIES

CAUTION: DO NOT DISASSEMBLE BOLTED GRATES AND CHECK FRAME WIDTH INSIDE BEFORE SETTING SECTIONS IN CONCRETE.

Supplied By:

**TRENCHDRAIN**  
SUPPLY

877-903-7246

www.trenchdrainsupply.com